

Annexation of Mt. Wullersdorf Forest Reserve to FMU Ulu Kalumpang

Mt. Wullersdorf FR which is 7,885 hectares was administered by the District Forestry Officer of Tawau Forestry District. Presently there are no forest restoration activities in this FR. A large part of this reserve especially in the eastern part, is covered by various land titles which is under investigation. The illegal encroachment happened especially in the western portion adjacent to Ulu Kalumpang, as well as in the South. This FR is adjoining to Ulu Kalumpang FR, (See Map 25.1). SFM practices are needed to secure the safety of the reserve and to rehabilitate the encroached areas. On 1st April 2009, the Director decided to put this FR under SFM management practices. This FR was annexed to FMU Ulu Kalumpang to form a larger FMU Ulu Kalumpang-Mt Wullersdorf and to be administered by the DFO Kunak. The total areas of this project now becomes 62,771 hectares, which includes three (03) VJRs; (i) Kalumpang VJR107C (950 ha), (ii) Kalumpang VJR107D (1,950 ha) and (iii) Kalumpang VJR107E (868 ha). The new title for this project is “Ulu Kalumpang-Wullersdorf SFM Project”.

Forest Restoration in Sg. Mantri (Southeast of Ulu Kalumpang FR)

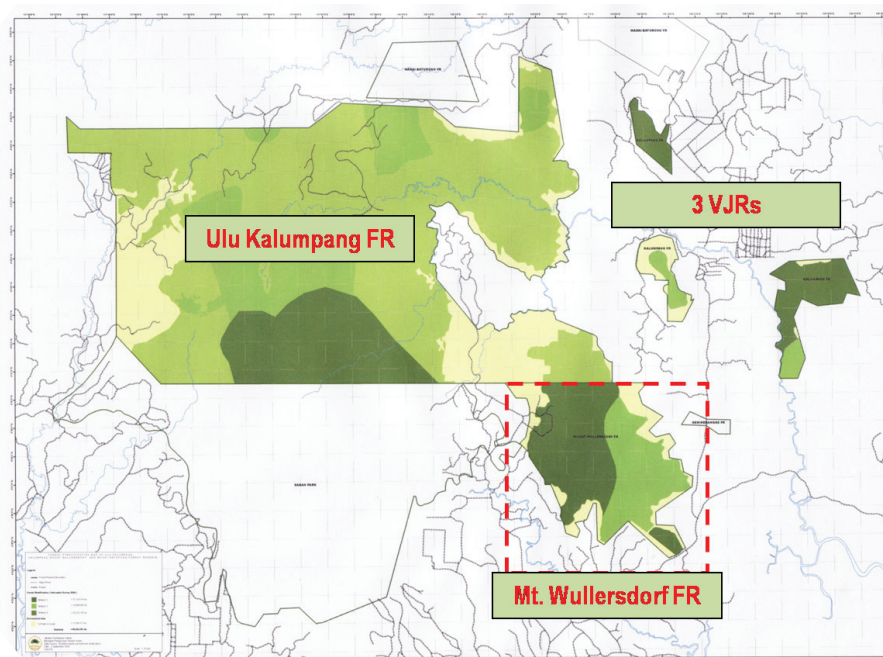
The work to restore the encroached forest area was continued in 2009. The awarded contractor Syarikat Pertanian Kondowoi Pemborong Am was given the full responsibility to implement all the forest rehabilitation activities in the Sg. Mantri area.

The area planned for restoration in 2009 was 175 ha, out of which only 149.46 hectares were planted with various species as listed in the Table 25.1. A total of 25.54 ha were not planted as the areas fall on road reserves, rivers and rocky areas not suitable or not possible for planting. The planted areas are divided into four blocks namely; Block E, F, G and H, (see Map 25.2). A total of 42,597 seedlings were successfully planted in all blocks, (see Table 25.2). A total of 54.95% of the planted seedlings were from the Dipterocarp group mainly of the *Shorea* spp. A total of 946 *Eucalyptus grandis* seedlings were planted in an opened area at Block F. The seedlings were sourced from the Sabah Forest Industries (SFI). The overall growth and survival rate of the planted trees in 2008 and 2009 was reasonably good. Only 12 - 15% mortality was recorded. Dead or stunted trees were replaced during the maintenance activities which were carried out 3 times through the year.

Due to the shortage of allocation in 2009, the project staff took the initiative to fertilize all the trees which were planted in 2008. This was done to enhance the growth performance of the planted trees in order to ensure the success of the forest rehabilitation program in Ulu Kalumpang. Since 2008, a total of 355.78 hectares in Sg. Mantri area with 86,534 trees planted, has been restored.

Table 25.1: Total area planted in Sg. Mantri since 2008

Year	Planted area (ha)	Total seedlings
2008	156.32	43,937
2009	149.46	42,597



Map 25.1 : Ulu Kalumpang-Wullersdorf SFM Project area

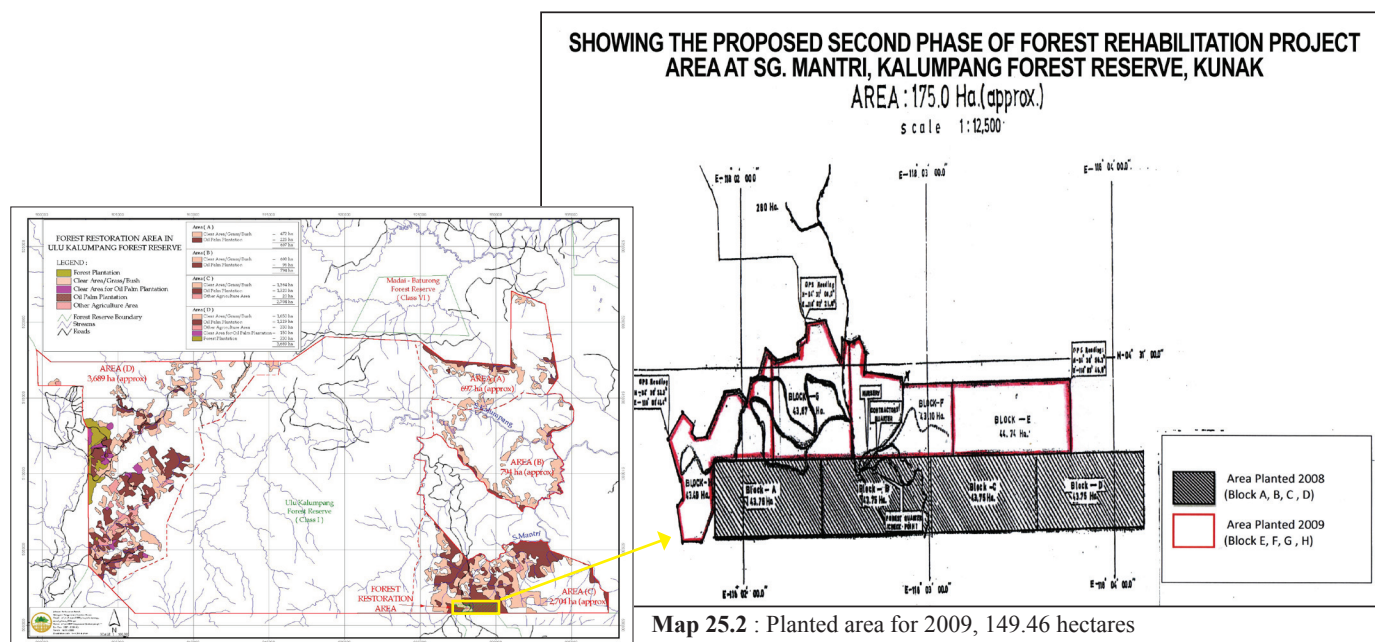


Table 25.2 : Planted tree species in Sg Mantri area, Ulu Kalumpang FR for the year 2009

No.	Planted seedling	Numbers	Hectareage	Percentage
1.	Laran	5,623	19.73	13.20
2.	Sentang	3,991	14.00	9.37
3.	Durian	1,312	4.60	4.60
4.	Cempedak	400	1.40	0.94
5.	Seraya	21,784	76.44	51.14
6.	Binuang	901	3.16	2.12
7.	Terap	887	3.12	2.08
8.	K. Semangkuk	107	0.37	0.25
9.	Merbau	2,463	8.65	5.78
10.	Kalumpang	690	2.42	1.62
11.	Bangkal	327	1.15	0.77
12.	Bayur	407	1.43	0.96
13.	Kapur	524	1.84	1.23
14.	Magas	108	0.38	0.25
15.	Gapis	27	0.09	0.06
16.	Urat Mata	1,100	3.86	2.58
17.	<i>Eucalyptus grandis</i>	946	3.32	2.22
18.	Ketapang	500	1.75	1.17
19.	Angsana	500	1.75	1.17
Total		42,597	149.46	



Planting activities done by the awarded contractor



(Left to right) Maintenance of planted seedlings (planted 2008 and 2009)



Planted trees in 2008 such as Laran, Kapur Paji, Kembang Semangkok and Kapur Gumpait



Planted trees in 2009 such as Laran, Kapur Paji, Binuang, Merbau, Seraya Bukit

Boundary Demarcation

There is no demarcation work or new survey boundary for Ulu Kalumpang Forest Reserve except for the maintenance of the boundary to ensure the rentises are clear at all times for the purpose of monitoring and control of the reserve area from any new encroachment. The maintenance has done by the awarded contractor and also by project staff (See table 25.4).

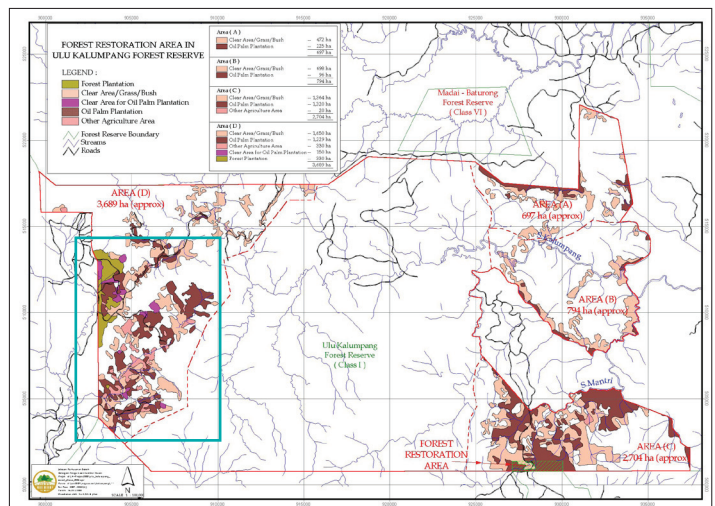


Boundary demarcation activities

Sabah Development Corridor (SDC) Project in Ulu Kalumpang

A total of RM3.8 million was allocated from SDC funds to cover some of the expenditure for the planned activities within the year of 2009 and 2010. This includes rehabilitation of 600 hectares of the encroached area in the Cenderamata Landau division of Ulu Kalumpang forest reserve, construction of an 'Irish' bridge across the Sungai Mantri, the purchase of satellite images for the entire project area, the construction of one unit of Forest Checking Station at Kalumpang Forest Reserve VJR107D (Sapang), and the demarcation of Kalumpang Forest Reserve VJR107C (Mount Forbes & Sangster) boundary.

The implementation of forest restoration in the Cenderamata Landau Division was started on 2nd December 2009. Ecotend Sdn. Bhd. was appointed as the contractor to implement the restoration programme until the end of 2010. The scope of the contract is to destroy the illegally planted oil palm and cocoa in the 600 hectares and to plant 198,000 suitable tree seedlings determined by the department. As of the end of December 2009, a total of 122 hectares of illegally planted oil palm were destroyed.



Map 25.3 : SDC's project site (in blue line) at Cenderamata Landau (West of Ulu Kalumpang FR)



Activities at Cenderamata Landau in December 2009

Development of Forest Management Plan (FMP)

A proper FMP has to be prepared as a guide for proper implementation of this SFM project. For this to be realized, Global Forestry Services (M) Sdn. Bhd. was appointed as a consultant to prepare a comprehensive 10 year Forest Management Plan for the project. This task is expected to be completed in April 2010. The various tasks and activities include; (i) resource evaluation and identification of encroachment (ii) evaluation of social, resource and environmental assessments (iii) evaluate data and analysis and identification of carbon projects (iv) finalise data collection and analysis, develop PIN for carbon project (v) finalise forest management plan procedures and proposed carbon projects. Other activities include collecting of multiple data from the ground through tree plot sampling (permanent sample plot) within the different forest strata, wildlife data via installed camera traps, and river water samples from different locations within and adjacent to the forest reserve and aerial surveillance.



Establishment of permanent sample plots



Spotted wildlife by the GFS and project staff within Ulu Kalumpang FR (from left) orangutan nest, Tembadau (Banteng) dung, Musang and Kura-kura

Clearing of illegal Oil Palm and Cocoa at Bukit Tajam, Ulu Kalumpang

The department through the awarded contractor has also cleared another 440 hectares of illegally planted oil palm at Bukit Tajam area, and reconstructed an eight (08) kilometer road along 'Jalan Gajah'. This road connects the Bukit Tajam Area to the Sg. Mantri Forest Checking Station. This road facilitates access to the Bukit Tajam area for the purpose of monitoring and control of the forest reserve area. This project cost RM1,053,400.00.

Since the inception of this work in 2008, a total of 1,070 hectares of illegally planted oil palm, cocoa and other crops have been destroyed. A total of 355.78 hectares have been restored and planted with indigenous tree species. The balance area will be continuously restored in 2010 and during the 10th Malaysia Plan within the year 2011-2015.



Destroyed illegally planted oil palm at Bukit Tajam



Reconstructed and Maintenance of road along 'Jalan Gajah' within the reserve

Visitors to Ulu Kalumpang-Wullersdorf SFM Project

In the year 2009, a number of visitors came to visit the project area which included the Project Operational Committee Chairman, Deputy Director Fidelis Edwin Bajau, the MCEE Officer of Tawau Region, Zulkifli Suara. The District Forestry Officer of Beluran, MCEE Officer of Sandakan Region and other forestry staff also visited the project area to study the feasibility and to adapt the procedures and steps on how to restore or rehabilitate encroached areas. The Director of the National Audit Department, Sabah and his team also visited the Sg. Mantri project on 06th February 2009. They were doing auditing on the effect of the current management practices in Ulu Kalumpang FR to the environment especially on river water quality as Ulu Kalumpang is the one of most important watershed in the state. On the 30th March 2009, the Secretary of Natural Resources, Tuan Haji Abdul Halim bin Hj. Nayan accompanied by the Director of Forestry, Datuk Sam Mannan, visited the Sg. Mantri project. Both of them expressed satisfaction on the performance of the project and hoped that the performance will continuously be sustained to make it as a restoration model area and to be eventually certified under the Forest Stewardship Council (FSC).

Table 25.3 : Visitors to Ulu Kalumpang

No.	Agencies	Date	Objectives
1.	Global Forestry Services (M) Sdn Bhd	15 th January 2009	Stage 1-Baseline assessment for Ulu Kalumpang FR
2.	Director of National Audit Department, Sabah	06 th February 2009	Field visit and doing auditing
3.	Environmental Protection Department, Sabah	10 th February and 5 th March 2009	Taking river water samples from Sg. Mantri and Sg. Merotai within Ulu Kalumpang FR
4.	Secretary of Natural Resources, Sabah and the Director of Forestry	30 th March 2009	Field Visit
5.	Beluran District Forestry Officer and staffs	02 nd December 2009	Study Tour on how to rehabilitate ex-encroached areas



Field visit by the Secretary of Natural Resources and Director of Forestry

Field visit by the Director of Global Forestry Services (M) Sdn Bhd., (2nd from left)

Field visit by the Director of National Audit Departement, Sabah



Taking water samples by the Environmental Protection Department, Sabah

Field visit by the DFO Beluran and his team on 2nd December 2009

Cost Analysis

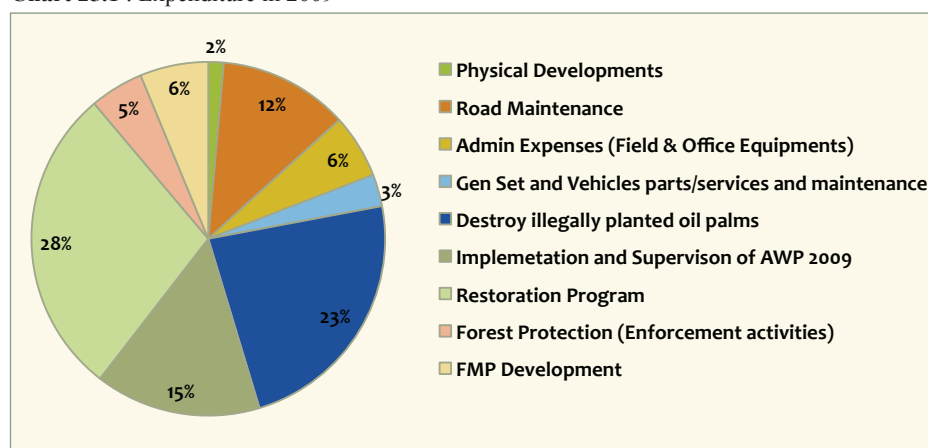
The actual cost of maintaining all forest management activities in this project for 2009 was RM 2,090,965.33 excluding salaries and fuel supplied by JKR. The approved allocation for the year was RM 2.5 million.

Table 25.4 : Expenditure in 2009

Physical Developments	29,445.00	Implementation and Supervision of AWP 2009	317,026.26
Road Maintenance (Contract no. JP/UK/01/09)	248,200.00	Restoration Program (Contract no. JP/UK/01/2008)	592,975.00
Admin Expenses (Field & Office Equipments)	121,988.85	Forest Protection (Enforcement activities)	102,562.00
Gen Set and Vehicles parts/services and maintenance	61,158.94	FMP Development	130,609.48
Work on destroying illegally planted oil palms (Contract no. JP/UK/01/09)	487,000.00		
Total Actual Cost			2,090,965.33

Note : Diesel, Petrol and Salaries are not funded under the allocated amount for this project.
The expenses are under SFD headquarters

Chart 25.1 : Expenditure in 2009



What was achieved in 2009?

Table 25.5 below shows the summarised achievement of all activities for this project in 2009

Table 25.5 : Achievement in 2009

Activities		Achievements
Forest Operations		
1.	Air Patrol / Air Surveillance	6 times (30 hours 55 minutes)
2.	Installation of signboards at the forest boundary within the project area	1. 583 Forest Signboards (Yellow Plate) 2. Eight (08) warning signs and project signboards 3. Three (03) SDC project signage
3.	Record of Forest Offences for the entire project area	1. Four (04) cases 2. Two (02) vehicles seized in Ulu Kalumpang Forest Reserve 3. Two (02) offenders caught in Wullersdorf Forest Reserve were indicted 4. Confiscated 533 pieces of barlogs at the Kalumpang Forest Reserve VJR107D (Sapang)
4.	Road Maintenance	Maintenance and reconstruction of Jalan Gajah (Sg. Mantri) and culvert installation were completed by the awarded contractor
Forest Rehabilitation		
1.	Encroachment area at Sg. Mantri, Ulu Kalumpang FR - Planted area 2009 - Planted 149.46 hectares + maintenance - Planted area 2008 - Three (03) times per year maintenance - 'Bukit Tajam' area - Destroyed illegally planted oil palm (area of 440 hectares)	
2.	Encroachment areas at Cenderamata Landau, Ulu Kalumpang FR - Cenderamata Landau - destroyed illegally planted oil palm (area of 122 hectares out of 600 hectares)	

continue

Activities		Achievements
3.	Encroachment area at Bukit Sangster, Kalumpang VJR107D FR - Enforcement activity - Poisoned 1,215 oil palm trees (8.90 hectares)	
Maintenance Of Forest Reserve Boundary		
1.	<ul style="list-style-type: none"> Sg. Mantri – Small holders scheme - Boundary between Bukit Tajam, Ulu Kalumpang FR with small holders. Appointed contractors : Juruukur Sii Sdn. Bhd. Sg. Mantri – TSH Plantation -Maintenance of the 1,450 meters boundary of Ulu Kalumpang FR. Done by the project staff. 	
2.	Cenderamata Landau – Sabah Softwood S/B - Maintenance of the 2,583 meters boundary of Ulu Kalumpang FR. Done by the project staff	
3.	Other work - No maintenance because the FR boundary concerned has not been surveyed/marked on the ground.	
Expenditure		
1.	Overall expenditure for the year of 2009 - 83% percent spent up to the end of December 2009	
Development Of Forest Management Plant		
	Appointed contractor/consultant; Global Forestry Services (M) Sdn Bhd Contract until the end of April 2010. Achievement of work 65%, until the end of December 2009.	